

Hybrid Solar Systems

Hybrid Solar System
Energy Storage Solar Inverter

- Lead-acid/lithium battery
- Battery reverse protection
- IP65
- Wide input voltage range
- Zero export function (integrated)
- Natural cooling, low noise
- Charge/discharge protection
- Smart energy management

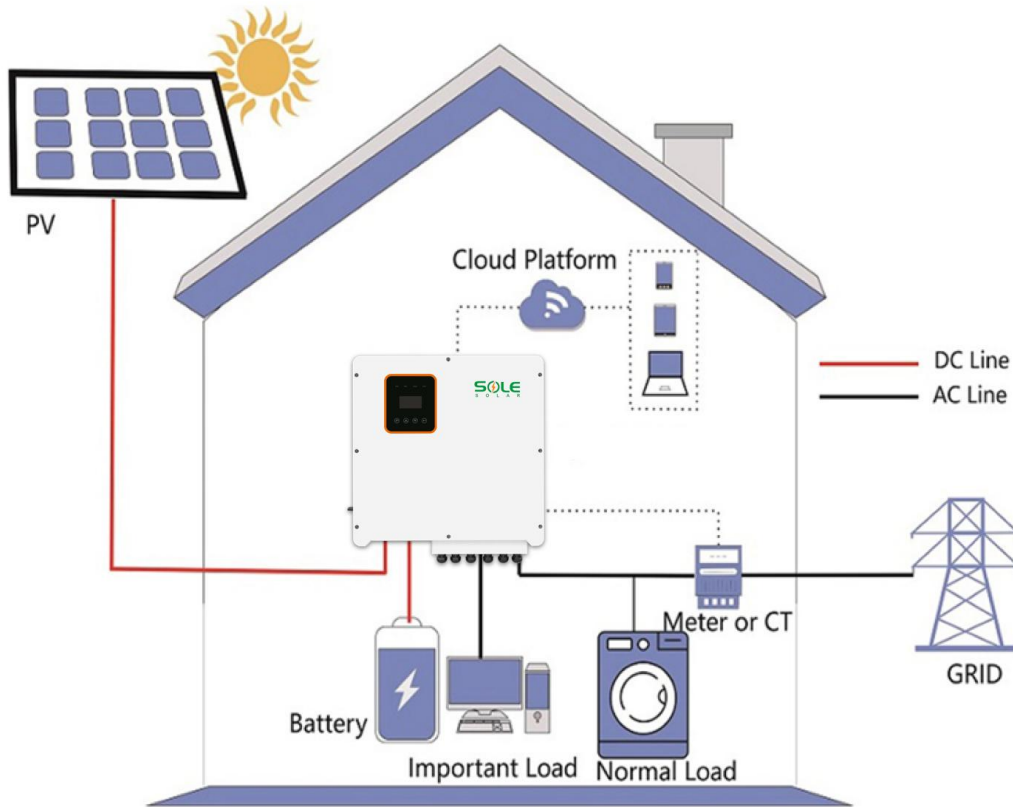
Hybrid Solar System Details

A hybrid system is when your solar panels remain connected to the grid's power lines and have a backup battery system to store excess power.

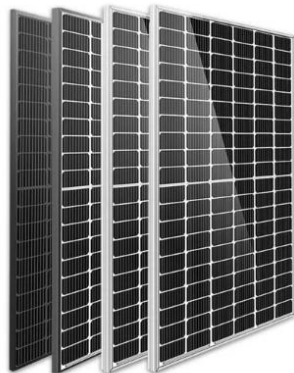
The sun's energy absorbed by the solar panels goes through an inverter to create usable electricity. From there, electricity either goes to your home, to your battery, or to the grid.

The benefit of a hybrid solar system is that you will always have power in any situation.

With a backup battery, the excess energy that your solar panels create (but your home does not use), will be stored in this battery. Then, when the sun is not shining, this battery will provide your power during the night, system blackouts or inclement weather.



Solar Systems Solutions



SOLE SOLAR PANELS

- Poly Solar Panel, Mono Solar Panel, PERC- High Voltage & High Efficiency.
- Using high efficiency solar cells.
- Low-light Performance.
- Durability Against Extreme Environmental Conditions.
- High quality junction box and connector systems.
- Guarantee the reliability of Solar Products.

HYBRID INVERTER

- Wide input voltage range.
- IP65 , wall mounted design, saving space.
- Natural cooling, low noise.
- Compatible with lead-acid or lithium-ion battery.
- Touch screen LCD.
- Light weight,smart operation.
- Battery reverse connect protection.
- Intelligent energy management system for home.



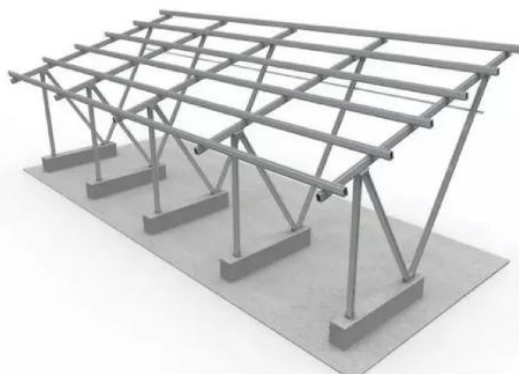
SOLE SOLAR LITHIUM BATTERY

- Lithium Battery / Lead-acid Battery.
- Longer Cycle Life.
- Wide suitability of ambient temperature range.
- Increased Flexibility.
- High discharge performance.
- Easy installation & Maintenance-free.
- Maintenance is simple, reducing deep discharge.



SOLAR MOUNTING SYSTEM

- Residential Roof(Pitched Roof).
- Ground Solar Mounting System.
- Car parking solar mounting system.
- Vertical wall solar mounting system.
- Commercial Roof(Flat roof&workshop roof)
- All aluminum structure solar mounting system.
- Strong weather ability, easy for operation.
- Make installation easy and convenient.



SOLAR SYSTEM ACCESSORIES



- Inverter panel connector.
- PV Cable & MC4 Connector.
- PV combiner box(Optional).
- Installation tools.
- Please check the details with SOLE SOLAR before buying,Thanks.

Packing



CONTACT INFORMATION

E-mail: info@solesolarpv.com

Address: 6/F, Fulin Building, No. 6297 Bao'an Avenue, Fuhai Street, Baoan District, Shenzhen, China.

Tel: 0086-0755-23088748

CONTACT US!