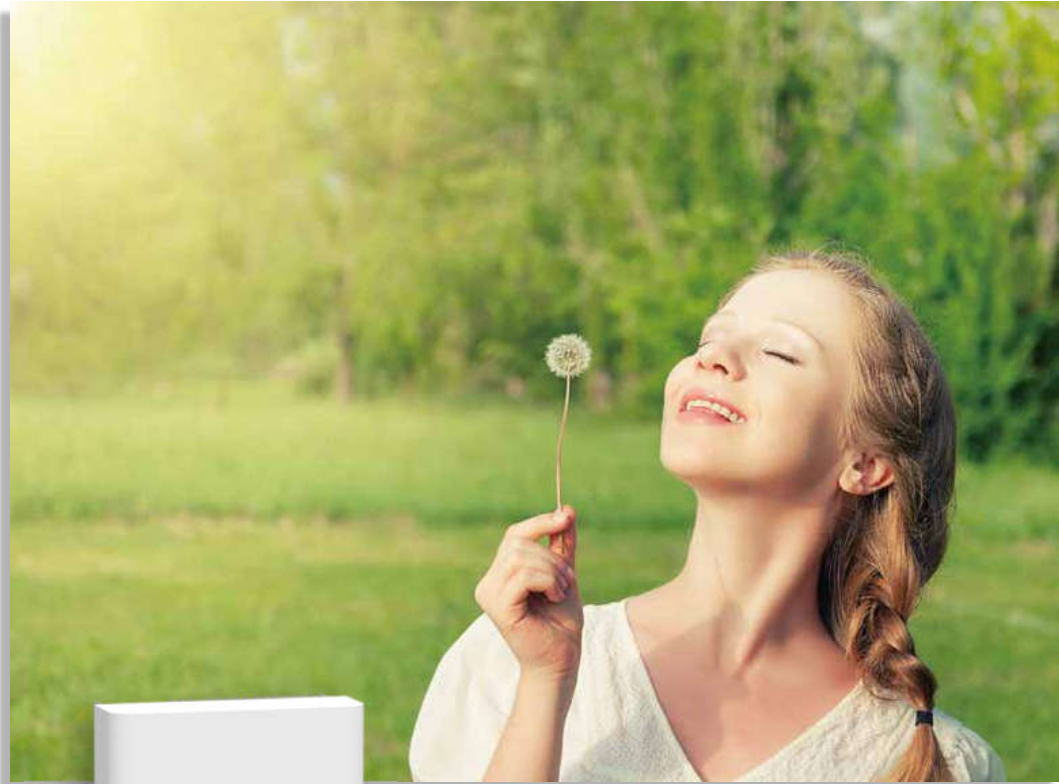







Three Phase String Inverter

SUN- 4 / 5 / 6 / 7 / 8 / 10 / 12 K-G05



-  2 MPP trackers, Max. efficiency up to 98.3%
-  Zero export application, VSG application
-  String intelligent monitoring (optional)
-  Wide output voltage range
-  Anti-PID function (Optional)

Technical Data

Model	SUN-4K-G05	SUN-5K-G05	SUN-6K-G05	SUN-7K-G05	SUN-8K-G05	SUN-10K-G05	SUN-12K-G05
Input Side							
Max. DC Input Power (kW)	5.2	6.5	7.8	9.1	10.4	13	15.6
Max. DC Input Voltage (V)	1000						
Start-up DC Input Voltage (V)							250
MPPT Operating Range (V)	120~850						200~850
Max. DC Input Current (A)	13+13						
Max. Short Circuit Current (A)	19.5+19.5						
No. of MPP Trackers	2						
No. of Strings per MPP Tracker	1						
Output Side							
Rated Output Power (kW)	4	5	6	7	8	10	12
Max. Active Power (kW)	4.4	5.5	6.6	7.7	8.8	11	13.2
Nominal Output Voltage / Range (V)	3L/N/PE 380V/0.85Un-1.1Un, 400V/0.85Un-1.1Un						
Rated Grid Frequency (Hz)	50 / 60 (Optional)						
Operating Phase	Three phase						
Rated AC Grid Output Current (A)	5.8	7.2	8.7	10.1	11.6	14.5	17.4
Max. AC Output Current (A)	6.4	8	9.6	11.1	12.8	15.9	19.1
Output Power Factor	0.8 leading to 0.8 lagging						
Grid Current THD	<3%						
DC Injection Current (mA)	<0.5%						
Grid Frequency Range	47~52 or 57~62 (Optional)						
Efficiency							
Max. Efficiency	98.3%						
Euro Efficiency	97.5%						
MPPT Efficiency	>99%						
Protection							
DC Reverse-Polarity Protection	Yes						
AC Short Circuit Protection	Yes						
AC Output Overcurrent Protection	Yes						
Output Overvoltage Protection	Yes						
Insulation Resistance Protection	Yes						
Ground Fault Monitoring	Yes						
Anti-islanding Protection	Yes						
Temperature Protection	Yes						
Integrated DC Switch	Yes						
Remote software upload	Yes						
Remote change of operating parameters	Yes						
Surge protection	DC Type II / AC Type II						
General Data							
Size (mm)	330Wx457Hx185D						330x457x205
Weight (kg)	10						11
Topology	Transformerless						
Internal Consumption	<1W (Night)						
Running Temperature	-25~-65°C, >45°C derating						
Ingress Protection	IP65						
Noise Emission (Typical)	<30 dB						
Cooling Concept	Natural cooling						
Max. Operating Altitude Without Derating	2000m						
Warranty	5 years						
Grid Connection Standard	CEI 0-21, VDE-AR-N 4105, NRS 097, IEC 62116, IEC 61727, G99, G98, VDE 0126-1-1, RD 1699, C10-11						
Operating Surroundings Humidity	0-100%						
Safety EMC / Standard	IEC/EN 61000-6-1/2/3/4, IEC/EN 62109-1, IEC/EN 62109-2						
Features							
DC Connection	MC-4 mateable						
AC Connection	IP65 rated plug						
Display	LCD1602						
Interface	RS485/RS232/Wifi/LAN						