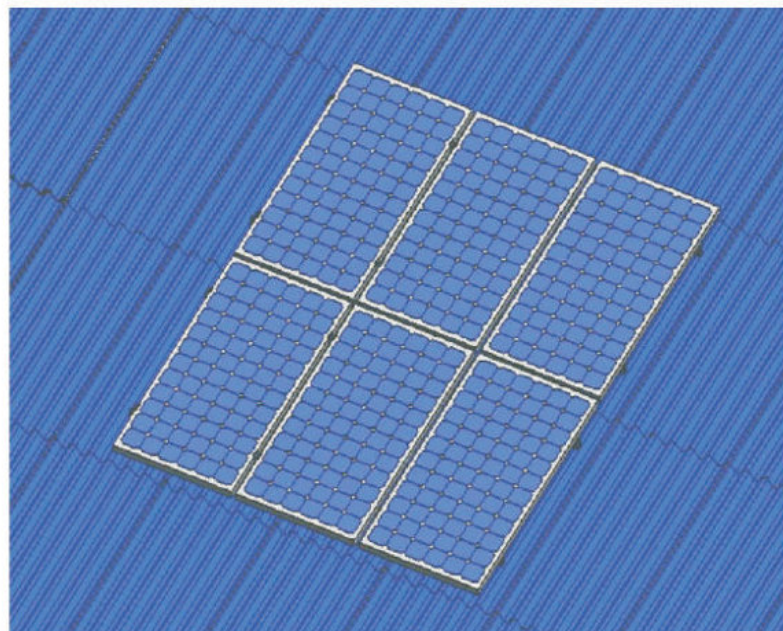


SR900 Type

彩钢瓦屋顶支架 (Pitch Metal Roof Solar Mounting)

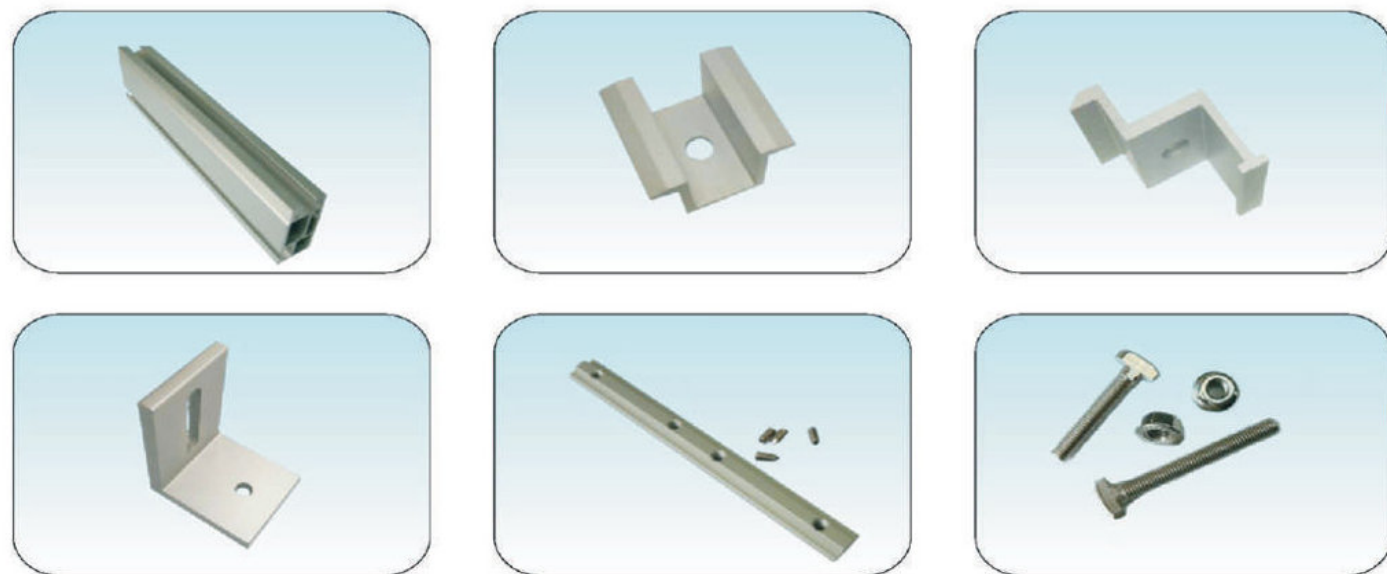


产品特性 Features

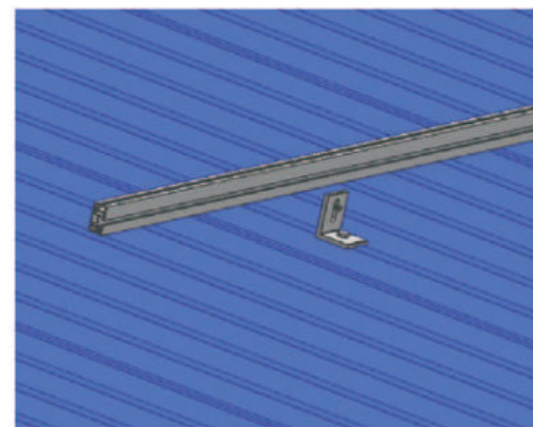
- 安装地点: 斜面彩钢瓦屋顶  
Place of use: Pitch Metal Rooftop
- 最大风速: 55m/s  
Wind load: max.55m/s
- 最大雪荷载: 1.5kN/m<sup>2</sup>  
Snow load: max.1.5kN/m<sup>2</sup>
- 组件尺寸: 适合任何有边框或无边框组件  
Laminates/modules:Framed and unframed
- 组件排列: 组件横排或竖排  
Module orientation: Vertical or horizontal
- 倾斜角度: 平行屋顶  
Setting angle: 0-60°
- 防腐处理: 不锈钢, 阳极氧化铝  
Surface treatment: Stainless steel & anodised AL
- 材质: 不锈钢304, 阳极氧化铝6063-T5  
Material: Stainless steel SUS304,Aluminium 6063-T5
- 参考标准: 符合澳洲, 欧洲及北美标准  
Standard: Suit for EU,AU,US standard
- 质量保证: 10年质保  
Warranty:10 years durability on materials

产品优势

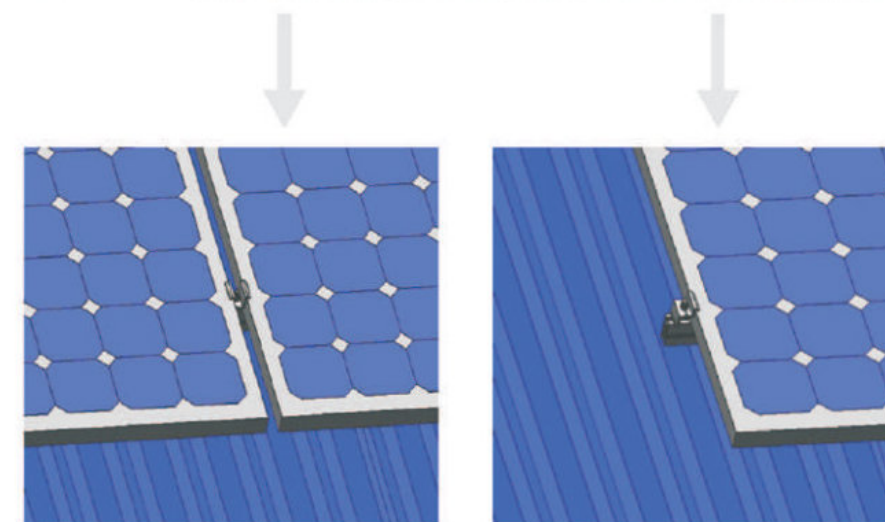
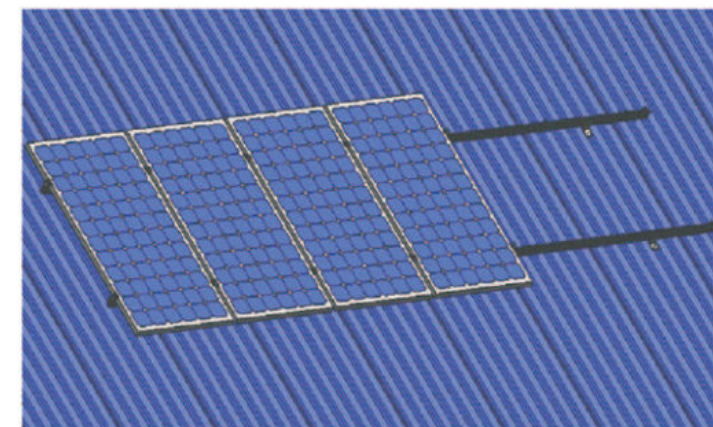
1. 安装简便.  
Simple and fast installation.
2. 强度高.  
High strength.
3. 适用性广.  
Strong applicability.
4. 符合欧洲、澳大利亚及美国标准.  
Solarun mounting system suit for EU, AU, US and other standards.



**1** 用自攻螺丝将L支脚固定在彩钢瓦上, 如下图  
Fix L feet on the roof with tapping screws, as below:

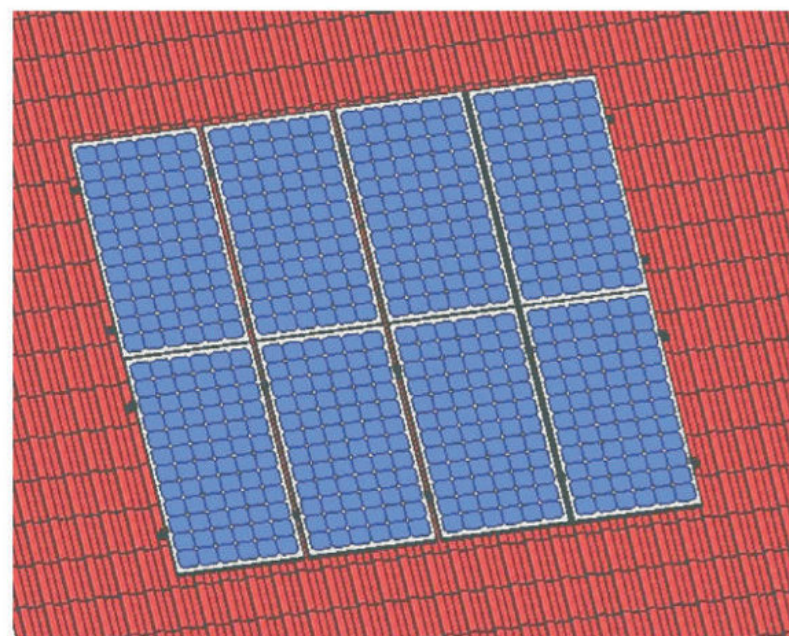


**2** 将组件用压块和T型螺栓固定在导轨上, 如下图  
Install solar panel with solar clamps and T bolts, as below



SR910 Type

砖瓦屋顶支架 (Pitch Tile Roof Solar Mounting)



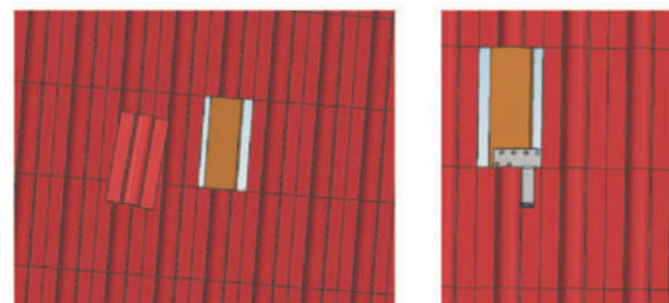
产品优势

1. 安装简便.  
Simple and fast installation.
2. 强度高.  
High strength.
3. 适用性广.  
Strong applicability.
4. 符合欧洲、澳大利亚及美国标准.  
Solarun mounting system suit for EU, AU, US and other standards.

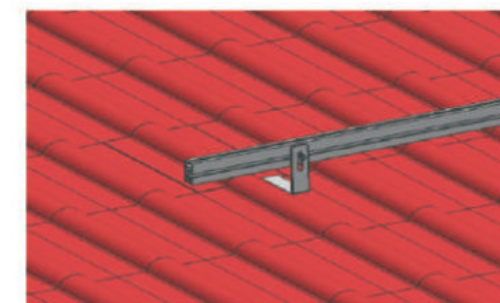
产品特性 Features

- 安装地点: 斜面砖瓦屋顶  
Place of use: Pitch Tile Rooftop
- 最大风速: 55m/s  
Wind load: max.55m/s
- 最大雪荷载: 1.5kN/m<sup>2</sup>  
Snow load: max.1.5kN/m<sup>2</sup>
- 组件尺寸: 适合任何有边框或无边框组件  
Laminates/modules: Framed and unframed
- 组件排列: 组件横排或竖排  
Module orientation: Vertical or horizontal
- 倾斜角度: 平行屋顶  
Setting angle: 0-60°
- 防腐处理: 不锈钢, 阳极氧化铝  
Surface treatment: Stainless steel & anodised AL
- 材质: 不锈钢304, 阳极氧化铝6063-T5  
Material: Stainless steel SUS304, Aluminium 6063-T5
- 参考标准: 符合澳洲, 欧洲及北美标准  
Standard: Suit for EU, AU, US standard
- 质量保证: 10年质保  
Warranty: 10 years durability on materials

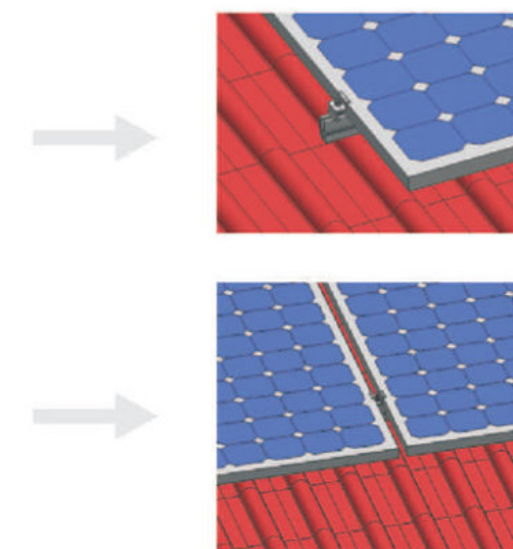
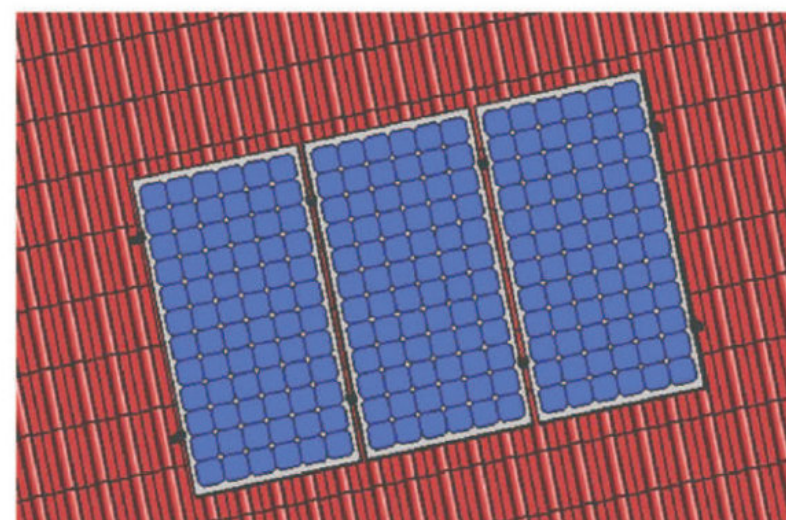
**1** 移开瓦片, 用自攻螺丝将挂钩固定在檐条上, 如下图  
Move the tiles, fix hook on the purlin with tapping screws, as below:



**2** 用T型螺栓将导轨固定在挂钩上, 如下图  
Install rail on the hook with T bolts, as below:



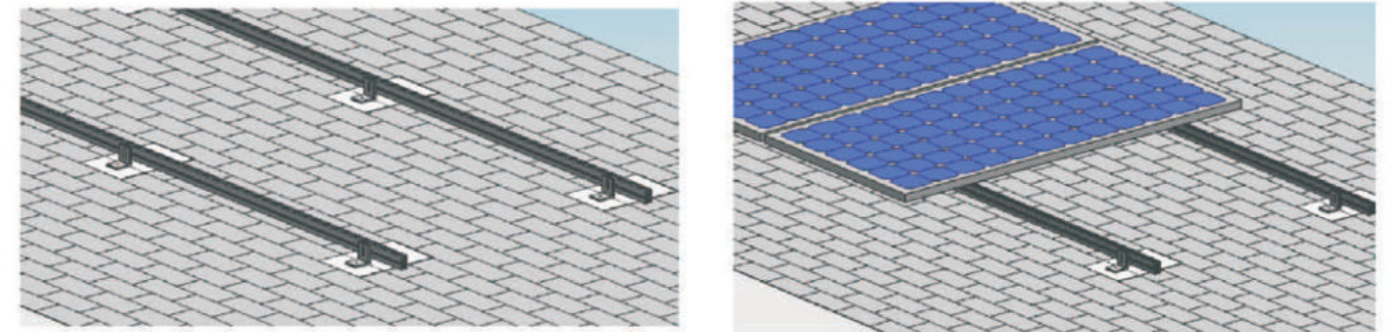
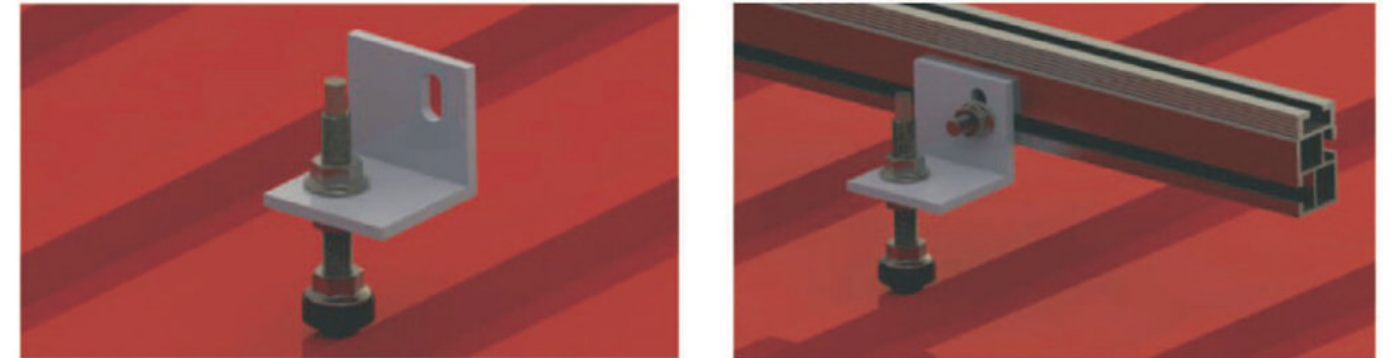
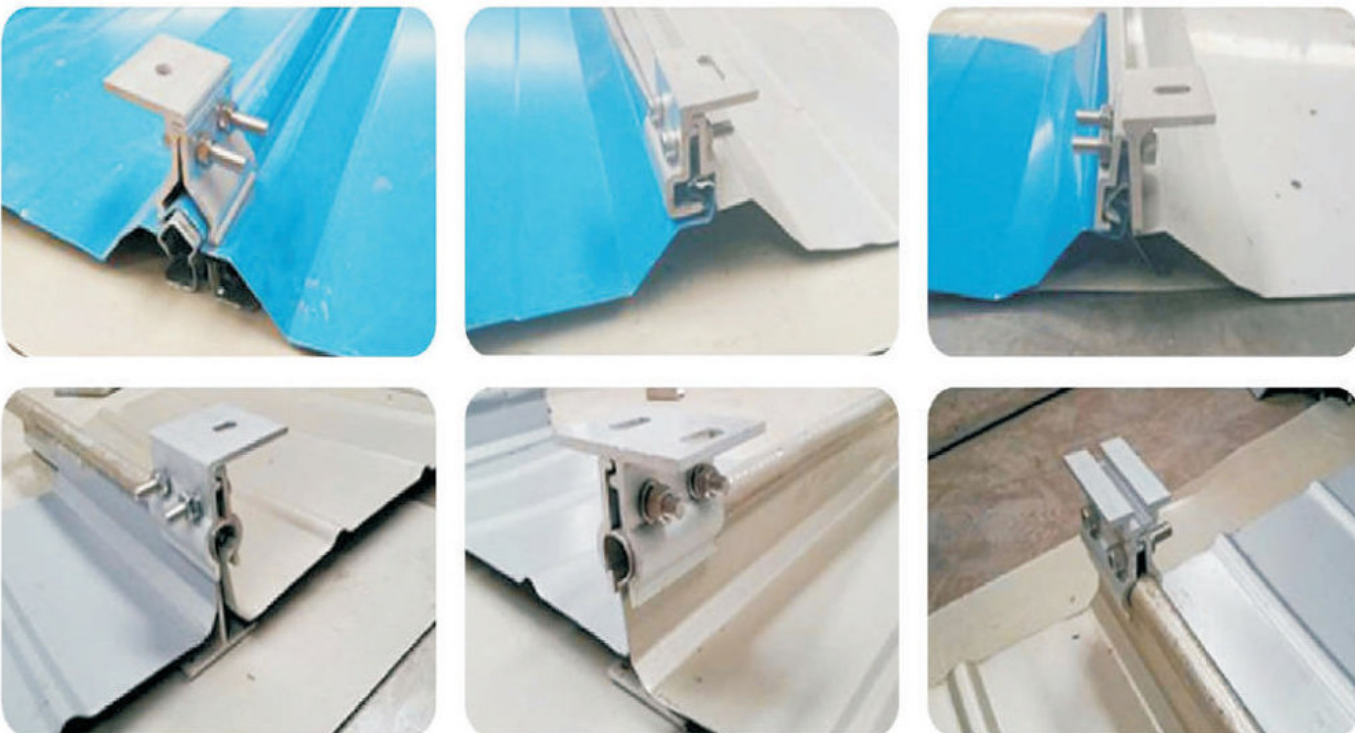
**3** 将组件用压块和T型螺栓固定在导轨上, 如下图  
Install solar panel with solar clamps and T bolts, as below:



Customized Solutions

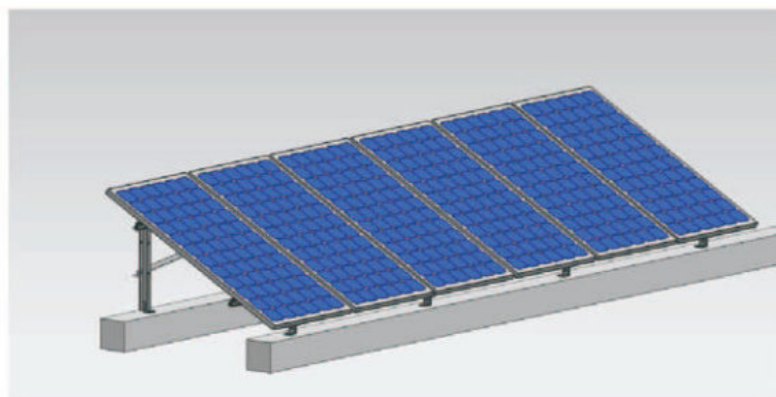
定制方案

Our customized solutions apply high wear-resistant materials to resist wind, snow loads and other corrosive action. Our comprehensive utilization of the aluminum alloy anodized, ultra thick hot-dip galvanizing, stainless steel and anti-UV aging technology process to ensure the service life of our solar brackets.



SR800 Type

平面屋顶支架 (Flat Roof Solar Mounting)



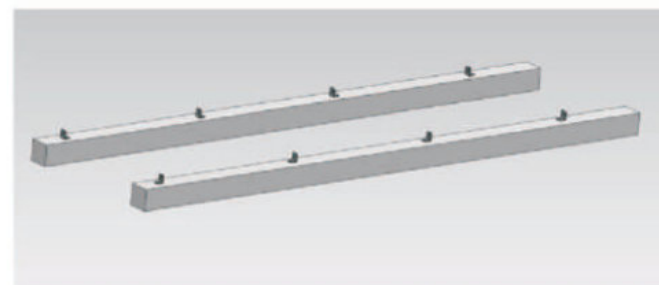
产品特性 Features

- 安装地点: 平面屋顶或地面  
Place of use: Flat Rooftop or Ground
- 最大风速: 55m/s  
Wind load: max.55m/s
- 最大雪载荷: 1.5kN/m<sup>2</sup>  
Snow load: max.1.5kN/m<sup>2</sup>
- 组件尺寸: 适合任何有边框或无边框组件  
Laminates/modules:Framed and unframed
- 组件排列: 组件横排或竖排  
Module orientation: Vertical or horizontal
- 倾斜角度: 5-60°  
Setting angle: 5-60°
- 防腐处理: 不锈钢, 阳极氧化铝  
Surface treatment: Stainless steel & anodised AL
- 材质: 不锈钢304, 阳极氧化铝6063-T5  
Material: Stainless steel SUS304,Aluminium 6063-T5
- 参考标准: 符合澳洲, 欧洲及北美标准  
Standard: Suit for EU,AU,US standard
- 质量保证: 10年质保  
Warranty:10 years durability on materials

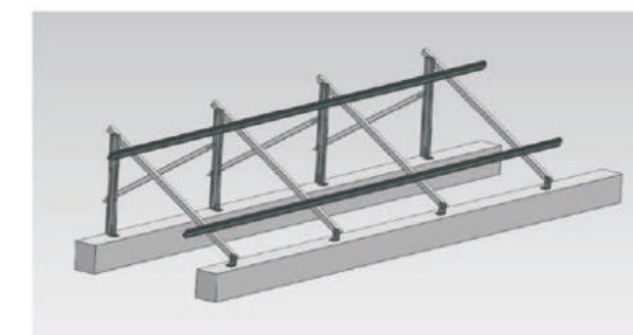
产品优势

1. 安装简便.  
Simple and fast installation.
2. 强度高.  
High strength.
3. 适用性广.  
Strong applicability.
4. 符合欧洲、澳大利亚及美国标准.  
Solarun mounting system suit for EU, AU, US and other standards.

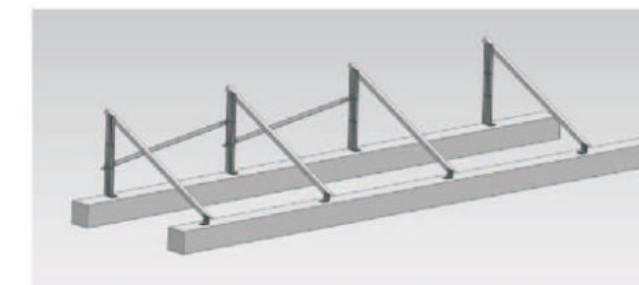
**1** 用膨胀螺栓将L支脚固定在水泥平地上, 如下图  
Fix L feet on the concrete ground with expansion bolts, as below:



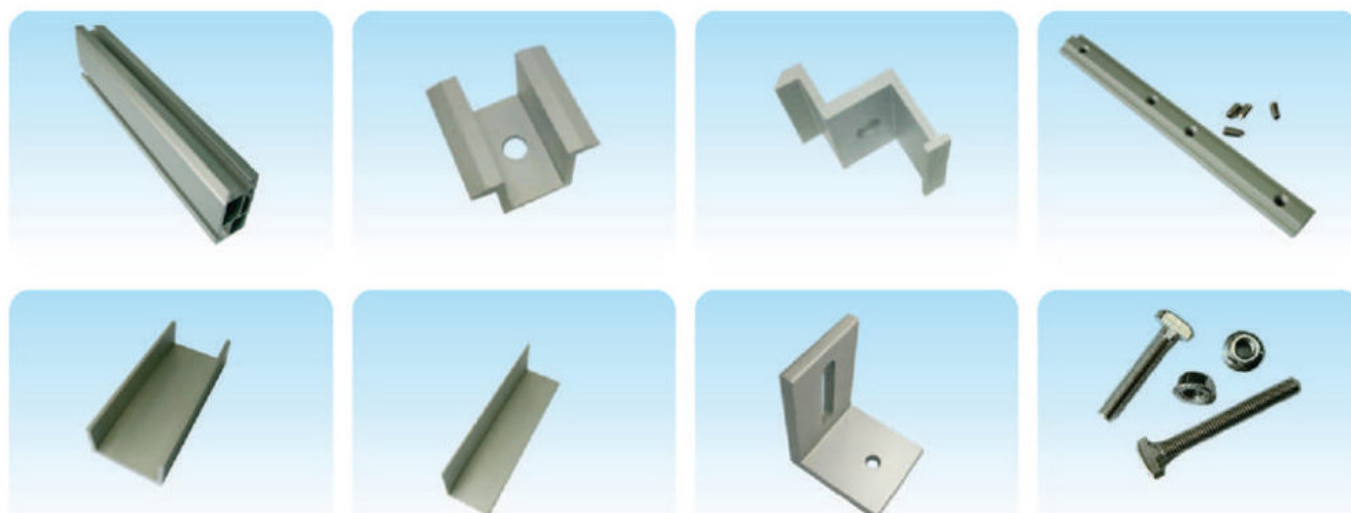
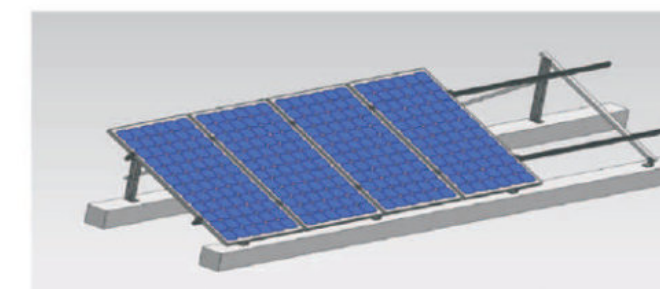
**3** 用T型螺栓将导轨固定在斜梁上, 如下图  
Install rail on the cross beam with T bolts, as below:



**2** 用六角螺栓将支撑臂和斜梁固定在L支脚上, 如下图  
Install support beam and cross beam on the L feet with hexagonbolts, as below:

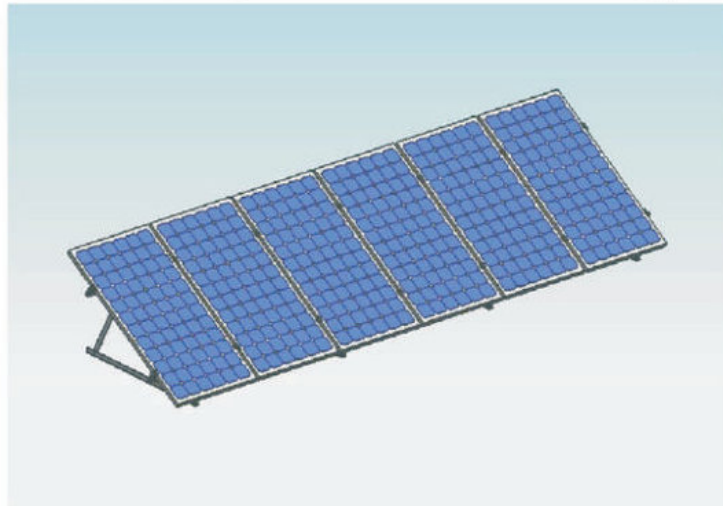


**4** 将组件用压块和T型螺栓固定在导轨上, 如下图  
Install solar panel with solar clamps and T bolts, as below:



SR810 Type

平面屋顶支架 (Flat Roof Solar Mounting)

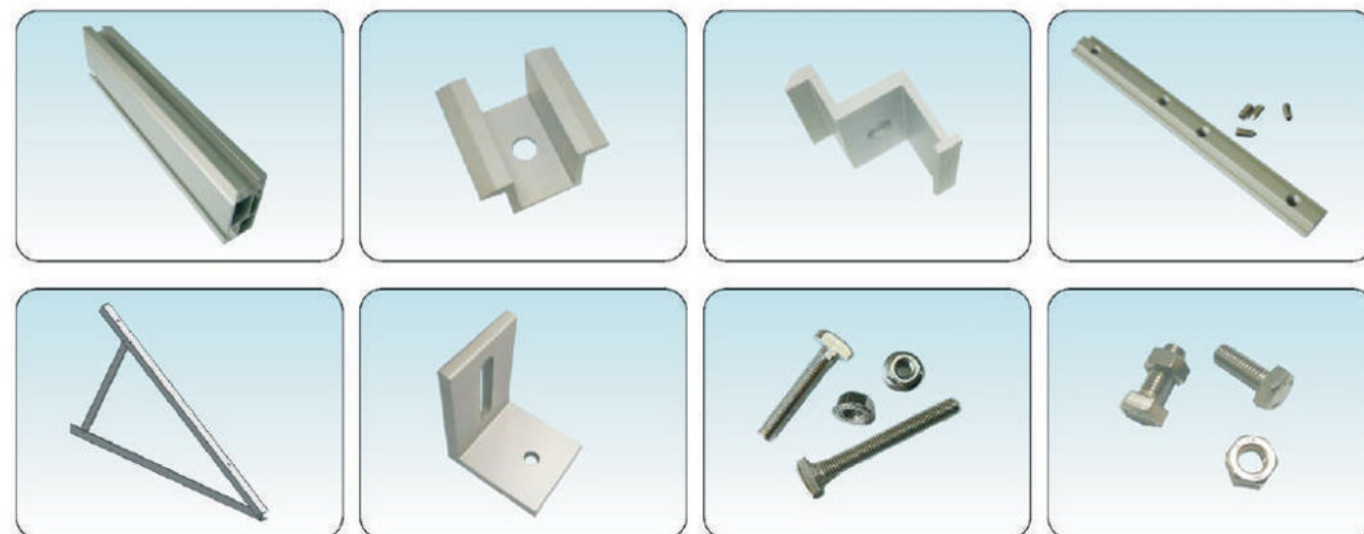


产品特性 Features

- 安装地点: 平面屋顶或地面  
Place of use: Flat Rooftop or Ground
- 最大风速: 55m/s  
Wind load: max.55m/s
- 最大雪荷载: 1.5kN/m<sup>2</sup>  
Snow load: max.1.5kN/m<sup>2</sup>
- 组件尺寸: 适合任何有边框或无边框组件  
Laminates/modules: Framed and unframed
- 组件排列: 组件横排或竖排  
Module orientation: Vertical or horizontal
- 倾斜角度: 5-60°  
Setting angle: 5-60°
- 防腐处理: 不锈钢, 阳极氧化铝  
Surface treatment: Stainless steel & anodised AL
- 材质: 不锈钢304, 阳极氧化铝6063-T5  
Material: Stainless steel SUS304, Aluminium 6063-T5
- 参考标准: 符合澳洲, 欧洲及北美标准  
Standard: Suit for EU, AU, US standard
- 质量保证: 10年质保  
Warranty: 10 years durability on materials

产品优势

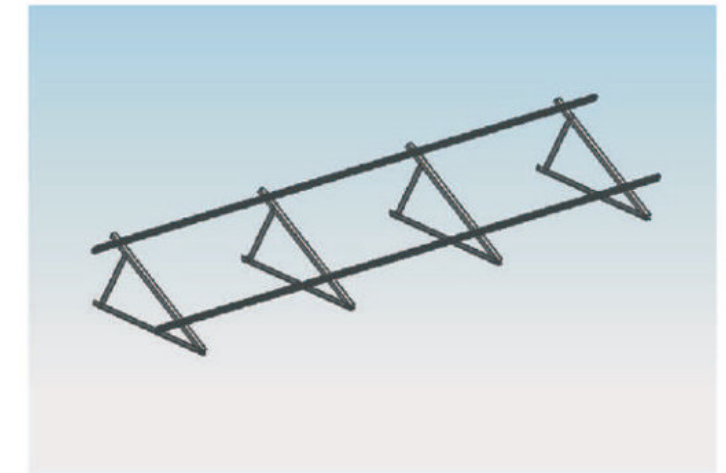
1. 安装简便.  
Simple and fast installation.
2. 强度高.  
High strength.
3. 适用性广.  
Strong applicability.
4. 符合欧洲、澳大利亚及美国标准.  
Solarun mounting system suit for EU, AU, US and other standards.



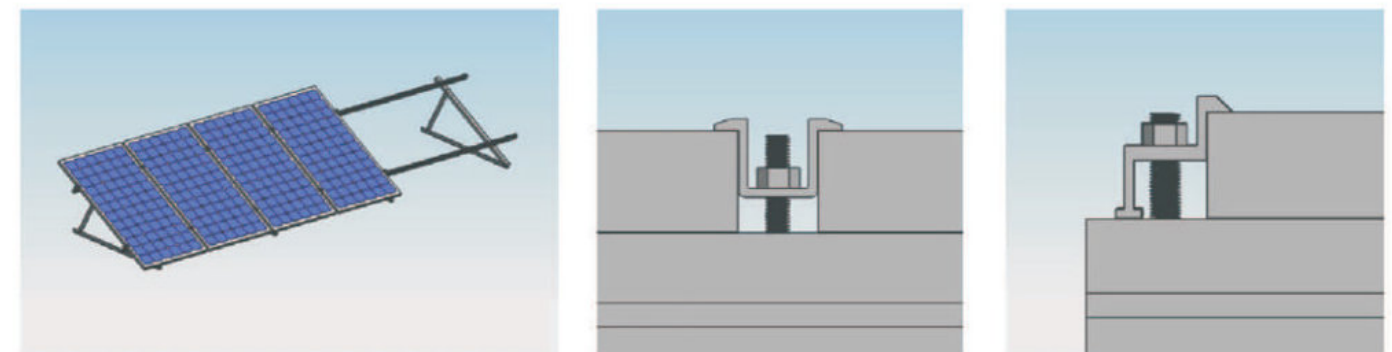
**1** 用膨胀螺栓将三角架固定在水泥平地上, 如下图  
Install triangle bracket on the concrete ground with expansion bolts, as below:



**2** 用T型螺栓将导轨固定在三角架上, 如下图  
Install rail on the triangle bracket with T bolts, as below:



**3** 将组件用压块和T型螺栓固定在导轨上, 如下图  
Install solar panel with solar clamps and T bolts, as below:



**SR820 Type**  
平面屋顶支架 (Flat Roof Solar Mounting)

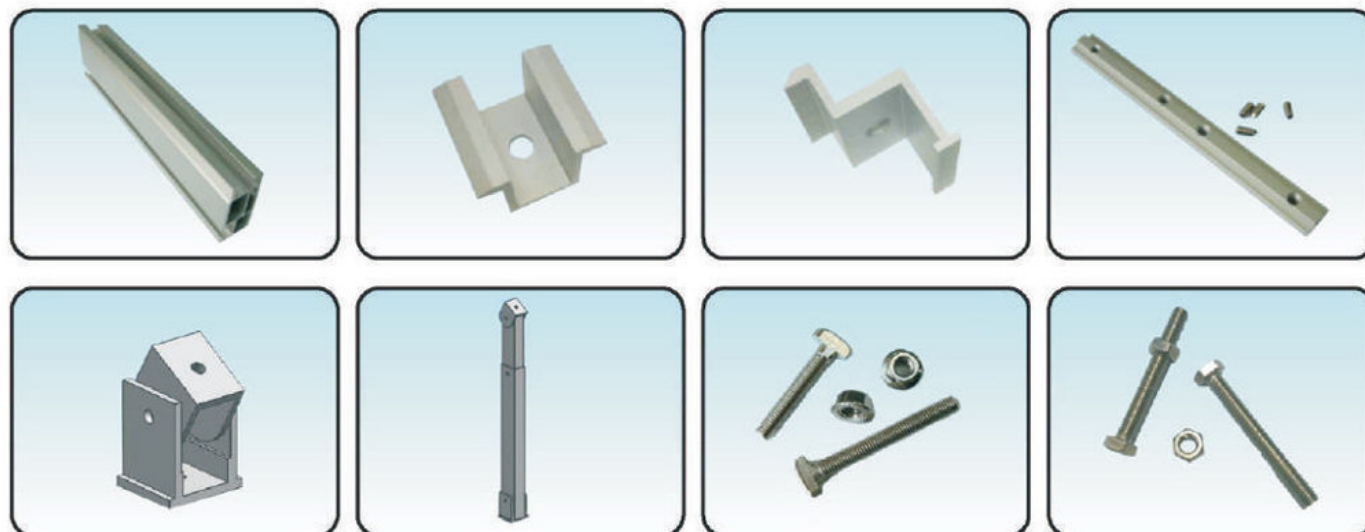


**产品优势**

1. 安装简便.  
Simple and fast installation.
2. 强度高.  
High strength.
3. 适用性广.  
Strong applicability.
4. 符合欧洲、澳大利亚及美国标准.  
Solarun mounting system suit for EU, AU, US and other standards.

**产品特性 Features**

- 安装地点: 平面屋顶或地面  
Place of use: Flat Rooftop or Ground
- 最大风速: 55m/s  
Wind load: max.55m/s
- 最大雪载荷: 1.5kN/m<sup>2</sup>  
Snow load: max.1.5kN/m<sup>2</sup>
- 组件尺寸: 适合任何有边框或无边框组件  
Laminates/modules:Framed and unframed
- 组件排列: 组件横排或竖排  
Module orientation: Vertical or horizontal
- 倾斜角度: 5-60°  
Setting angle: 5-60°
- 防腐处理: 不锈钢, 阳极氧化铝  
Surface treatment: Stainless steel & anodised AL
- 材质: 不锈钢304, 阳极氧化铝6063-T5  
Material: Stainless steel SUS304, Aluminium 6063-T5
- 参考标准: 符合澳洲, 欧洲及北美标准  
Standard: Suit for EU,AU,US standard
- 质量保证: 10年质保  
Warranty:10 years durability on materials



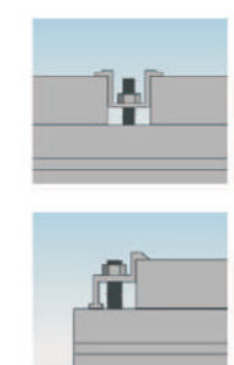
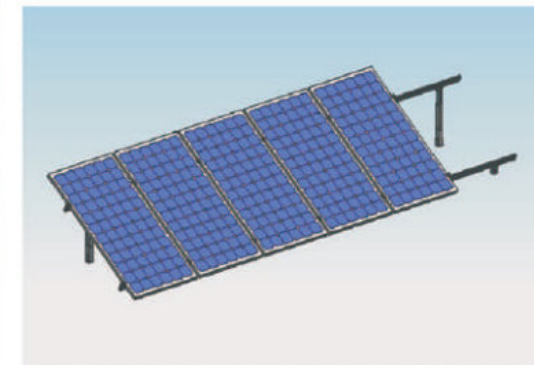
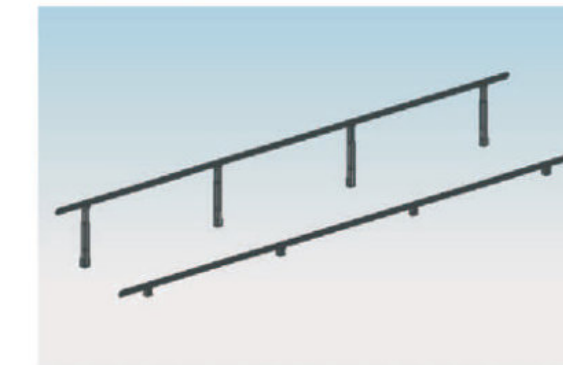
**1** 用膨胀螺栓将底座固定在水泥平地上, 如下图  
Install base on the concrete ground with expansion bolts, as below:



**2** 用膨胀螺栓将装配好的调节杆固定在水泥平地上, 如下图  
Install adjustable beam on the concrete ground with expansion bolts, as below:



**3** 用T型螺栓将导轨固定在底座和调节杆上, 如下图  
Install rail on the base and adjustable beam with T bolts, as below:



**4** 将组件用压块和T型螺栓固定在导轨上, 如下图  
Install solar panel with solar clamps and T bolts, as below:



SR710 Type  
立柱支架 (Pole Solar Mounting)



产品特性 Features

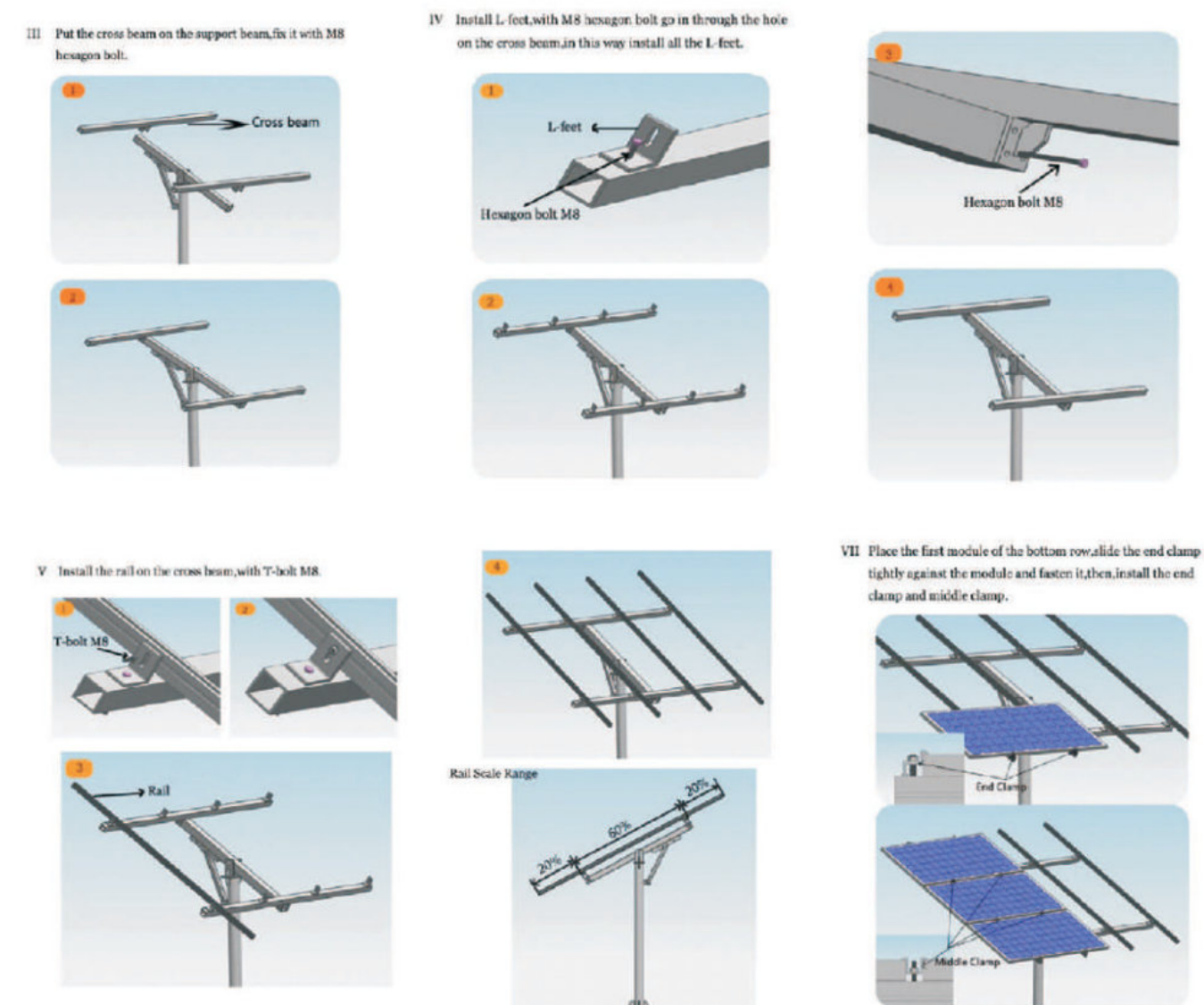
- 安装地点: 地面  
Place of use: Ground
- 最大风速: 45m/s  
Wind load: max.45m/s
- 最大雪载荷: 1.5kN/m<sup>2</sup>  
Snow load: max.1.5kN/m<sup>2</sup>
- 组件尺寸: 适合任何有边框或无边框组件  
Laminates/modules:Framed and unframed
- 组件排列: 组件横排或竖排  
Module orientation: Vertical or horizontal
- 倾斜角度: 5-60°  
Setting angle: 5-60°
- 防腐处理: 不锈钢, 热镀锌, 阳极氧化铝  
Surface treatment: Stainless steel & anodised AL
- 材质: 不锈钢304, 热镀锌铁Q235, 阳极氧化铝6063-T5  
Material: Stainless steel SUS304, hot dipped steel Q235, Aluminium 6063-T5
- 参考标准: 符合澳洲, 欧洲及北美标准  
Standard: Suit for EU,AU,US standard
- 质量保证: 10年质保  
Warranty:10 years durability on materials

Installation Steps

I Installation the Support Beam, with M20 hexagon bolt.



II Installation adjustable beam



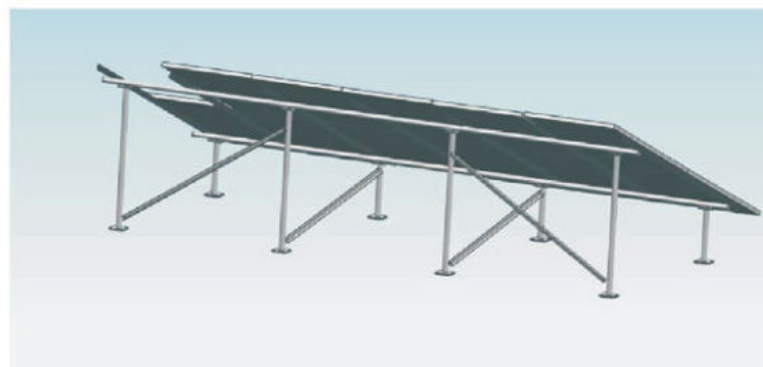
SR600 Type

地面支架 (Ground Solar Mounting)



产品特性 Features

- 安装地点: 地面  
Place of use: Ground
- 最大风速: 45m/s  
Wind load: max.45m/s
- 最大雪载荷: 1.5kN/m<sup>2</sup>  
Snow load: max.1.5kN/m<sup>2</sup>
- 组件尺寸: 适合任何有边框或无边框组件  
Laminates/modules: Framed and unframed
- 组件排列: 组件横排或竖排  
Module orientation: Vertical or horizontal
- 倾斜角度: 5-60°  
Setting angle: 5-60°
- 防腐处理: 不锈钢, 热镀锌, 阳极氧化铝  
Surface treatment: Stainless steel & anodised AL
- 材质: 不锈钢304, 热镀锌铁Q235, 阳极氧化铝6063-T5  
Material: Stainless steel SUS304, hot dipped steel Q235, Aluminium 6063-T5
- 参考标准: 符合澳洲, 欧洲及北美标准  
Standard: Suit for EU, AU, US standard
- 质量保证: 10年质保  
Warranty: 10 years durability on materials





SR610 Type  
地面支架 (Ground Solar Mounting)



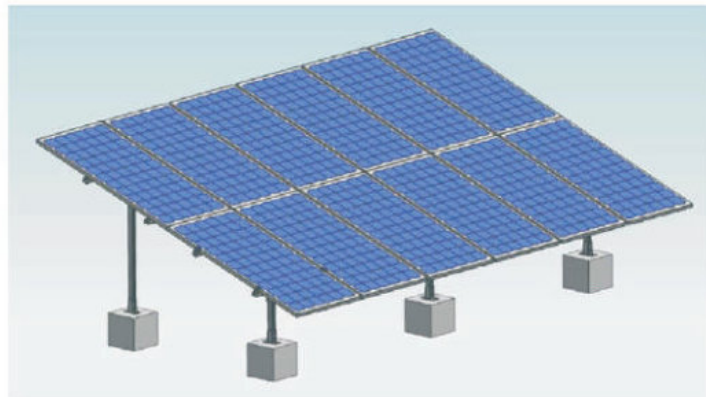
产品特性 Features

- 安装地点: 地面  
Place of use: Ground
- 最大风速: 45m/s  
Wind load: max.45m/s
- 最大雪载荷: 1.5kN/m<sup>2</sup>  
Snow load: max.1.5kN/m<sup>2</sup>
- 组件尺寸: 适合任何有边框或无边框组件  
Laminates/modules: Framed and unframed
- 组件排列: 组件横排或竖排  
Module orientation: Vertical or horizontal
- 倾斜角度: 5-60°  
Setting angle: 5-60°
- 防腐处理: 不锈钢, 热镀锌, 阳极氧化铝  
Surface treatment: Stainless steel & anodised AL
- 材质: 不锈钢304, 热镀锌铁Q235, 阳极氧化铝6063-T5  
Material: Stainless steel SUS304, hot dipped steel Q235, Aluminium 6063-T5
- 参考标准: 符合澳洲, 欧洲及北美标准  
Standard: Suit for EU,AU,US standard
- 质量保证: 10年质保  
Warranty: 10 years durability on materials



SR630 Type

地面支架 (Ground Solar Mounting)



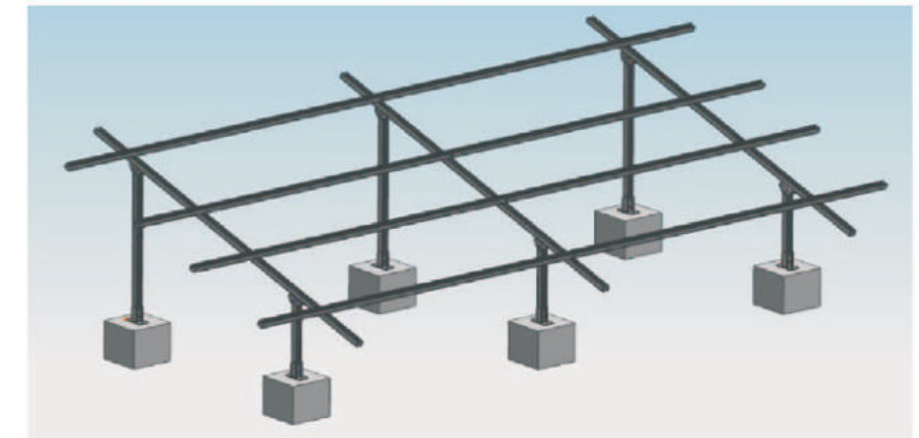
产品优势

1. 安装简便.  
Simple and fast installation.
2. 强度高.  
High strength.
3. 适用性广.  
Strong applicability.
4. 符合欧洲、澳大利亚及美国标准.  
Solarun mounting system suit for EU, AU, US and other standards.

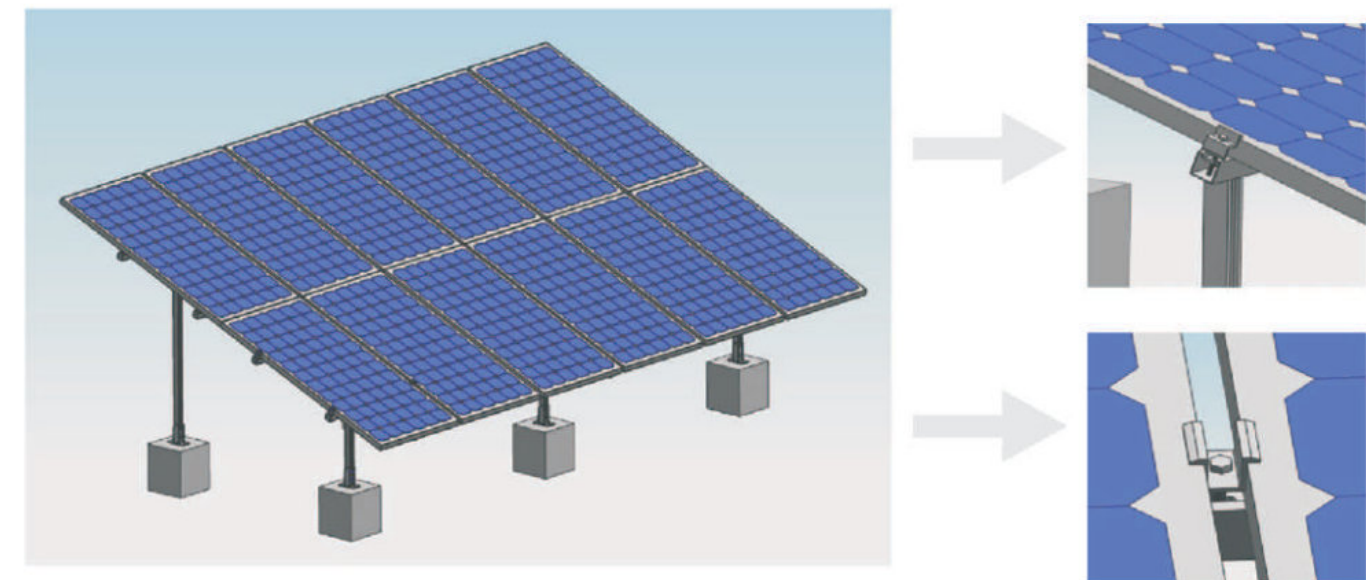
产品特性 Features

- 安装地点: 地面  
Place of use: Ground
- 最大风速: 45m/s  
Wind load: max.45m/s
- 最大雪载荷: 1.5kN/m<sup>2</sup>  
Snow load: max.1.5kN/m<sup>2</sup>
- 组件尺寸: 适合任何有边框或无边框组件  
Laminates/modules:Framed and unframed
- 组件排列: 组件横排或竖排  
Module orientation: Vertical or horizontal
- 倾斜角度: 5-60°  
Setting angle: 5-60°
- 防腐处理: 不锈钢, 热镀锌, 阳极氧化铝  
Surface treatment: Stainless steel & anodised AL
- 材质: 不锈钢304, 热镀锌铁Q235, 阳极氧化铝6063-T5  
Material: Stainless steel SUS304, hot dipped steel Q235, Aluminium 6063-T5
- 参考标准: 符合澳洲, 欧洲及北美标准  
Standard: Suit for EU,AU,US standard
- 质量保证: 10年质保  
Warranty:10 years durability on materials

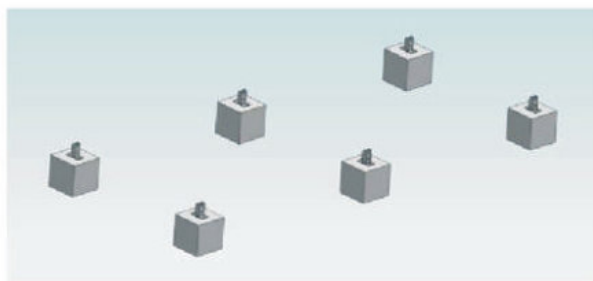
**5** 把导轨安装在斜梁上, 如下图  
Install rail on the cross beam, as below:



**6** 将组件用压块和T型螺栓固定在导轨上, 如下图  
Install solar panel with solar clamps and T bolts, as below:



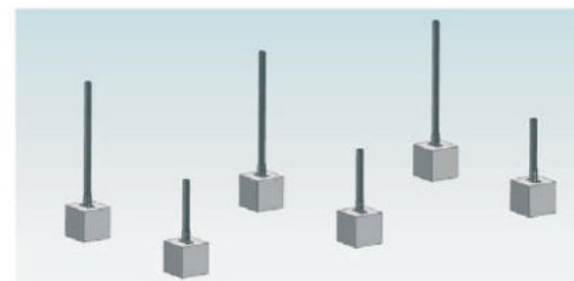
**1** 用膨胀螺栓将底座固定在水泥平地上, 如下图  
Install base on the concrete ground with expansion bolts, as below:



**3** 用外六角螺栓将铰链固定在前后立柱上, 如下图  
Install hinge on the front post and back post with hexagon bolts, as below:



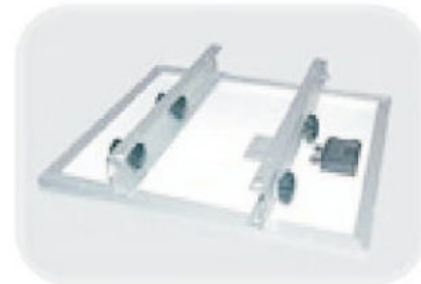
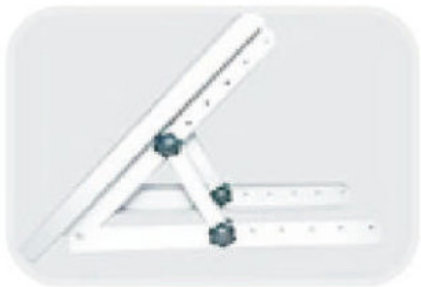
**2** 用外六角螺栓将前后立柱固定在底座上, 如下图  
Install front posts and back posts on the base with hexagon bolts, as below:



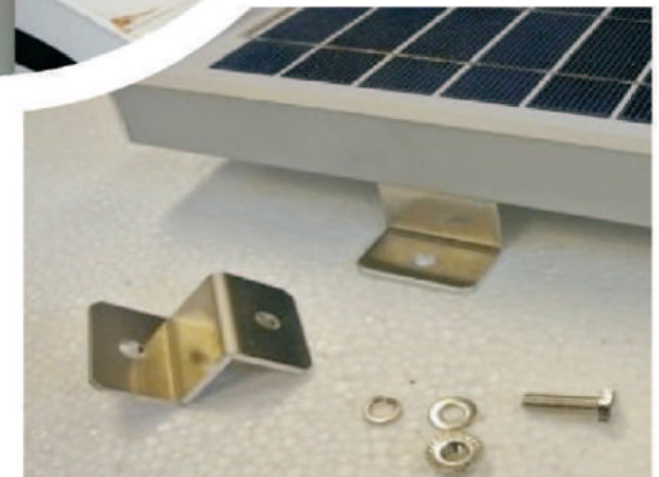
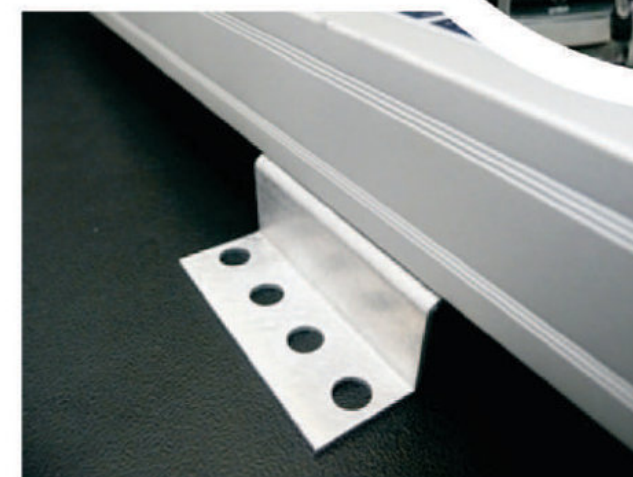
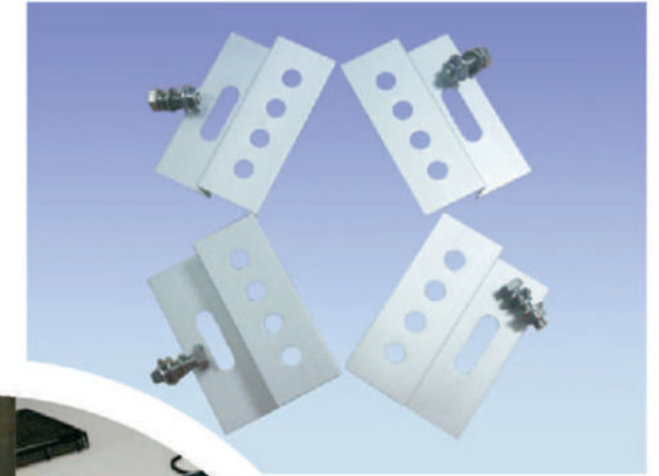
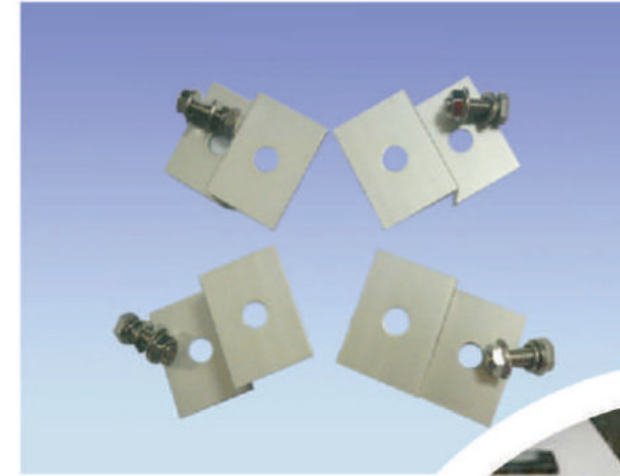
**4** 用六角螺栓将斜梁固定在铰链上, 如下图  
Install cross beam on the hinge with hexagon bolts, as below:



便携式支架  
Portable Folding Solar Mounting



Z支架  
Z type Solar Mounting Bracket





项目案例

